

# Waterlase express™



# USER INTERFACE

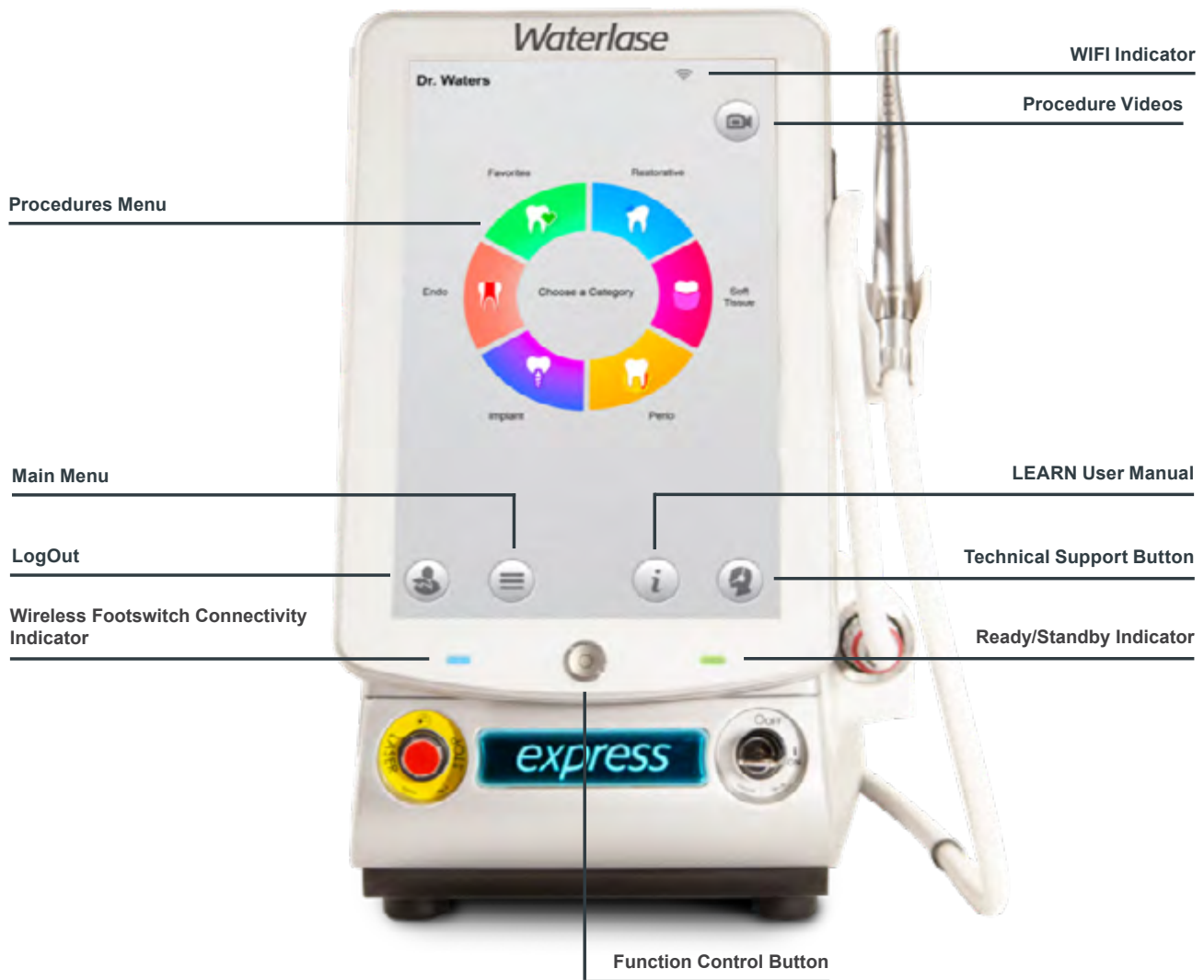


Figure 1

# SYSTEM COMPONENTS

The Waterlase Express all-tissue laser system includes the following system components:



Figure 2



Figure 3

## DAILY START-UP

1. Make sure the power cord is plugged in, the air line properly secured to the air inlet connector, and the remote interlock plug inserted in the remote interlock outlet. Whether or not the Remote Interlock feature is used; if the plug is not in place, the laser system will not turn on.
2. If using the wired footswitch, make sure the footswitch is plugged in to the console. Release footswitch cover by pressing down (on the side with the BIOLASE logo) to access the footswitch pedal for use.
3. Carefully insert the Handpiece onto the fiber shaft without twisting until it sits firmly against the connector and clicks into place.
4. Check the patient water bottle is more than 1/3 full; add distilled or de-ionized water, as needed; **DO NOT use tap or filtered water.**



Figure 4



Figure 5

- Turn the main power switch at the back of the console ON ( I ); insert the key into the Keyswitch and rotate it clockwise to the ON ( I ) position. The system will power up and the system software will begin to load (approximately 30 seconds).
- If multiple users are configured to the Waterlase Express laser system, select the proper account/user when prompted.
- Prime the Handpiece.
- When priming is completed, the Home (Procedure) screen will appear; the system will be in Standby mode.

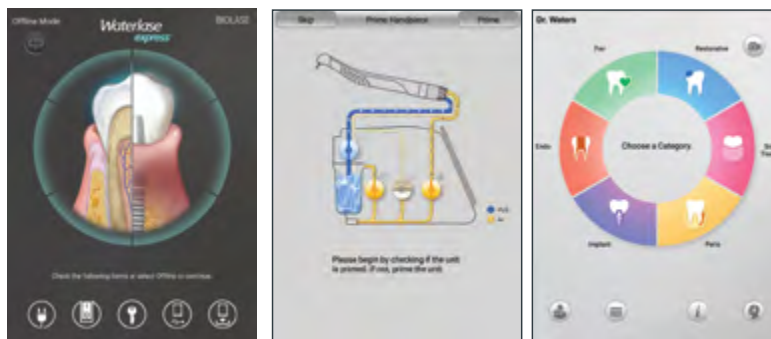


Figure 6

Choose a procedure, select and install a tip, and place the laser in Ready mode by pressing the Function Control button on the Control Panel. The laser is now ready to fire when the Footswitch is pressed.

## INSTALLING AND CHANGING THE TIP IN THE HANDPIECE

A laser tip is installed in the Handpiece to direct the laser energy: based on its shape, a tip will focus that energy differently onto the target tissue.

Tips may be installed using the Revolving Tip Holder, which safely holds/stores up to 6 tips at one time, or the Tip Remover included with the Handpieces.

Always inspect the Tip prior to use as described in Section 12 of the User Manual.

**DO NOT** use if damaged.

- Place the system in **Standby** mode;
- Remove the Tip Plug from the Handpiece head.
- The tip must be sterilized before initial use as described in Section 11 of the User Manual. Remove the Tip from its sterilization pouch and insert it into the Tip Holder or Revolving Tip Holder by aligning the first groove of the Tip ferrule against the receiving edges of the Holder, then sliding the Tip in; using tweezers facilitates this process.
- Align the Tip orifice of the Handpiece over the input end of the Tip placed in the Tip Holder or Revolving Tip Holder.
- Carefully lower the Handpiece and insert a clean/inspected Tip all the way until the shoulder of the Tip ferrule sits against the Handpiece head.
- Slide the Handpiece laterally through the slot, away from the Tip Holder or Revolving Tip Holder.



Figure 7



Figure 8



**CAUTION:** Never touch the proximal (input) or distal (output) end of the Tip. If the proximal surface is contaminated, it may damage the Tip, Handpiece, and Fiber Optic Cable. Hold the Tip only by the plastic ferrule.



**CAUTION:** Be careful not to hit the proximal (input) end of the Tip against the Handpiece head and not to break the fingers of the plastic ferrule.

To remove the Tip, repeat this process in reverse order:

1. Slide the Handpiece laterally through the slot toward the Tip Holder or Revolving Tip Holder.
2. Place your thumb against the selected tip slot to prevent the laser Tip from falling out of the Tip Holder when disconnecting it from the Handpiece.
3. Carefully lift the Handpiece to disengage the tip ferrule from the Handpiece head.
4. Use tweezers to slide the Tip out from the Tip Holder or Revolving Tip Holder; discard the used Tip in a medical waste sharps container.

## SLEEP MODE

The laser and Display will go into Sleep mode after 10 minutes of inactivity.

To “wake” the system, press the Function Control Button on the center of the Control Panel for 3 seconds.



**CAUTION:** Make sure the Handpiece is stored in the Handpiece Holder whenever the laser system is powering up or waking from Sleep state.

## END OF THE DAY

1. Press the logout icon at the bottom of the Home screen. [Figure 9]
2. Select “Purge,” and wait for the process to complete.
3. Disconnect the Handpiece and Tip. Dispose of the Tip in a medical waste sharps container. Wipe any remaining water from the fiber shaft with a lint-free gauze. Place the protective cover over the fiber shaft to protect the fiber.
4. Turn the Keyswitch counterclockwise to the OFF (O) position.
5. Turn the power switch to the OFF (O) position.
6. Use a lightly pre-moistened lens cleaning wipe or equivalent to clean any residue or dirt from the Display. DO NOT use soap, water, chemicals containing ammonia, bleach, alcohol, or abrasive cleaners.
7. Wipe down the laser console using a standard disinfectant, such as Cavicide; DO NOT use bleach or abrasive cleaners.
8. Refer to your Waterlase Express User Manual, for detailed instruction on the cleaning and sterilization of the Handpiece and Tips.

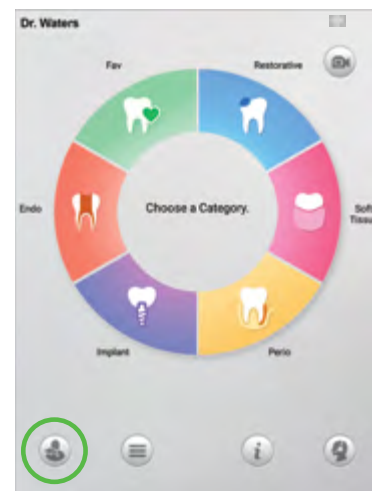


Figure 9

## TROUBLESHOOTING

Refer to Section 13 of the Waterlase Express User Manual. If you require further assistance please press the Customer Care button on the Waterlase Express display.



**CAUTION:** Press the Function Control button only once to change modes. The system will take approximately 1.5 seconds to respond when the button is pressed.



**CAUTION:** The optional wireless footswitch may be subject to interference from other wireless equipment, such as another wireless footswitch; if interference occurs, the laser may stop firing. To reactivate, stop pressing the footswitch, then press down and continue with the procedure.

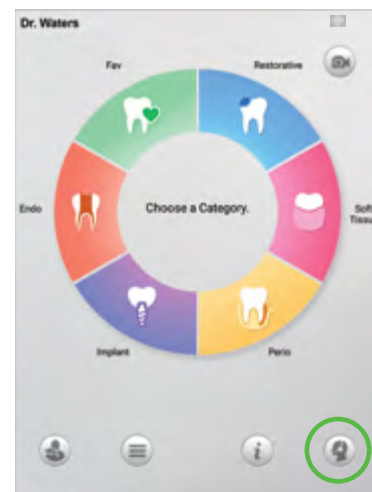


Figure 10

# BIOLASE

biolase.com

*Waterlase*  
*express™*



## **BIOLASE, INC.**

27042 Towne Centre Drive, Suite 270  
Foothill Ranch, CA 92610 USA

Toll Free: (833) BIOLASE  
Telephone: (949) 361-1200  
Fax: (949) 273-6687  
Service: (800) 321-6717



## **EU REPRESENTATIVE**

MT Promedt Consulting GmbH  
Ernst-Heckel-Straße 7  
66386 St. Ingbert  
+49 6894 581020  
[www.mt-procons.com](http://www.mt-procons.com)



## **MADE IN THE USA**

Copyright ©2022 BIOLASE, Inc. All rights reserved.

Waterlase Express™ software copyright ©2016 BIOLASE, Inc.

Epic, iLase, ezLase, ezTip, LaserWhite, Deep Tissue Handpiece, ComfortPulse, WaterLase, Waterlase Express and WaterLase iPlus are either trademarks or registered trademarks of BIOLASE, Incorporated in the United States and/or other countries. All other trademarks are property of their registered owners. Subject to change without notice.



5200381 Rev. A 0482